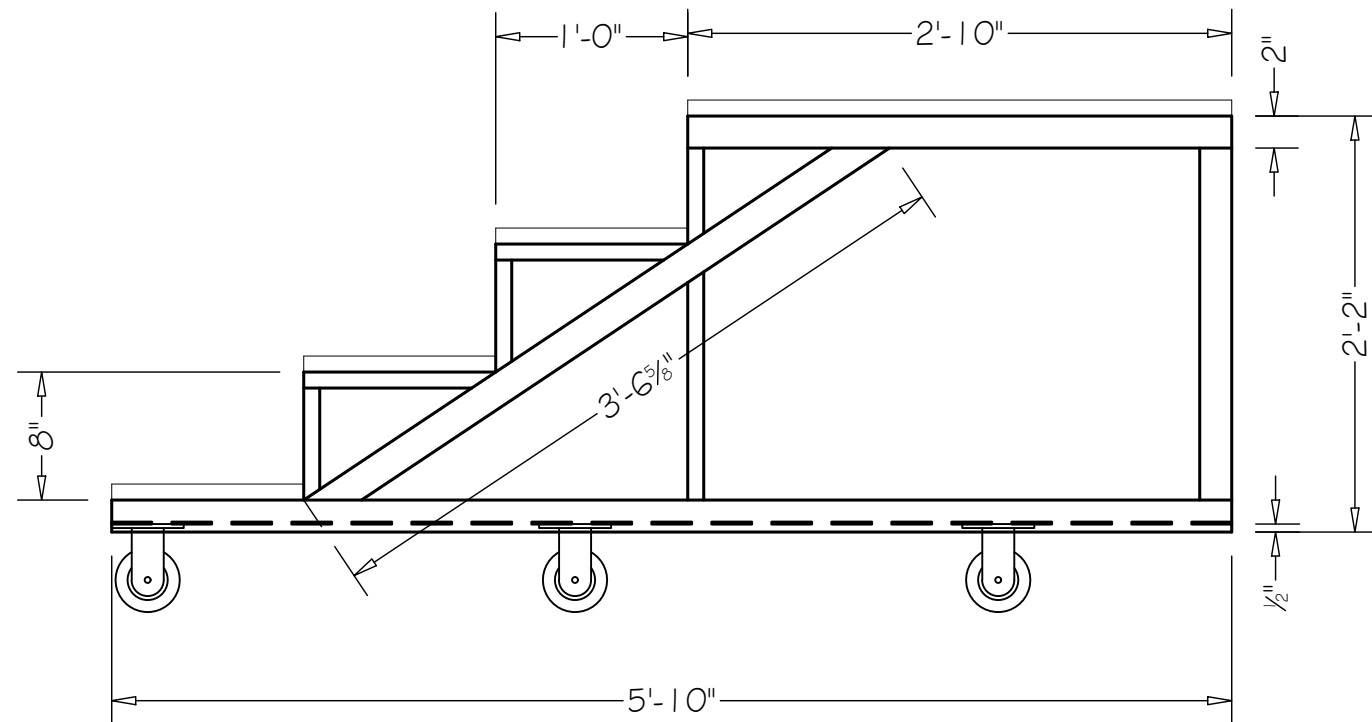
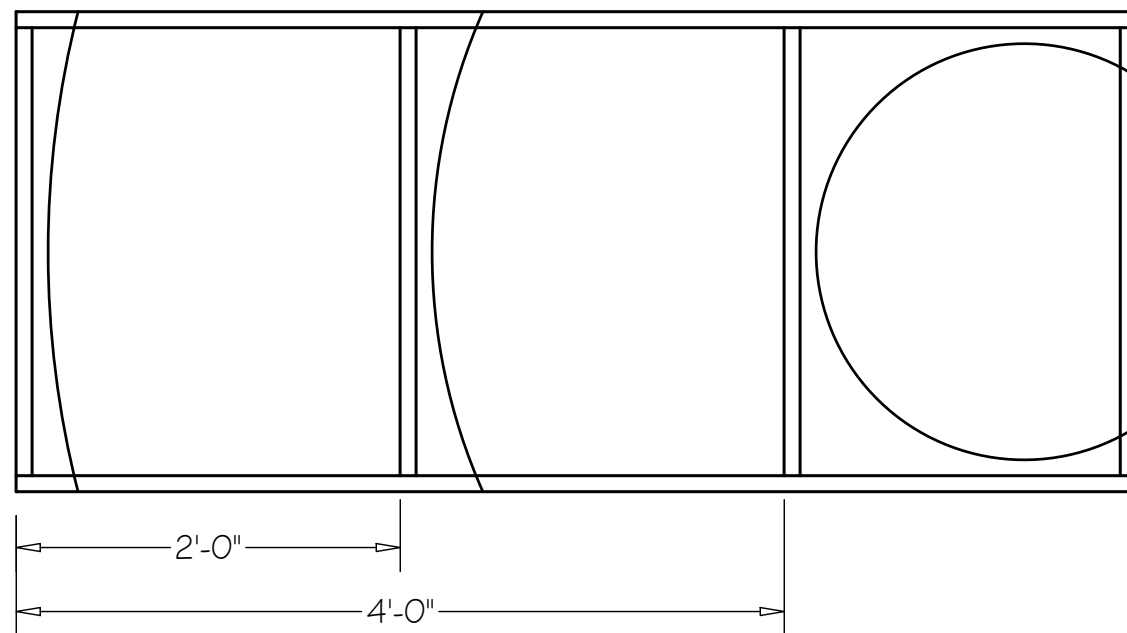


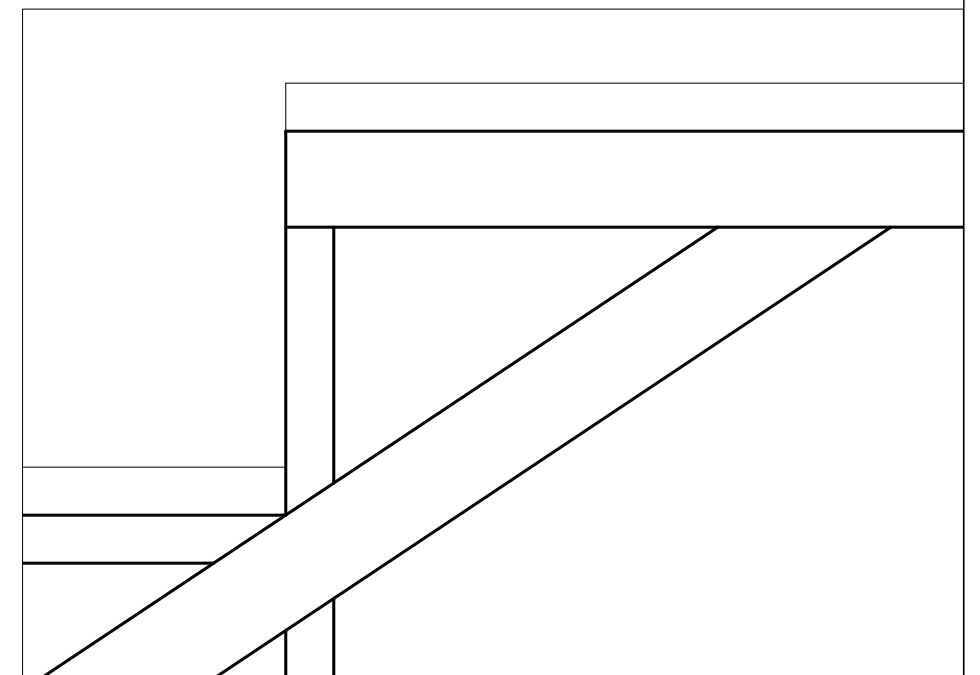
Front view



Side View:
1x1 and 1x2 steel construction
Treads are $\frac{3}{4}$ " ply and $\frac{1}{4}$ " Maso



Base: Construct from 1x2 steel
Caster plates will be added before full assembly



Peninsula Players Theatre

Chicago

Movable Stairs - Lower section

Designer: James E. Maronek

T.D.: Scott M. Boyle

Scale: 1" = 1'-0" Date: 7-25-12

12